

THE GUSTAVIAN



Tales From Abroad
pg 6



Basketball Season Tips Off
pg 16

November 7, 2014

www.weekly.blog.gustavus.edu

Established 1891

The results are in!

Rachael Manser
News Editor

Minnesota voters assembled at the polls for midterm elections on Tuesday, Nov. 4. The majority in the United States Senate and the Minnesota House of Representatives was shifted to the Republicans.

However, Minnesota voters favored Democratic candidates. The voter turnout was just above 50 percent, short of the 55-60 percent predicted for this election.

"Midterms generally come with low voter turnouts," Sophomore Co-President of College Democrats Peter Bode said.

Governor and Senator races were not viewed as close, as was the case with six of the eight state's U.S. House of Representative races, potentially a reason the turnouts were lower than predicted.

Throughout election season, Gustavus College Democrats and College Republicans worked together to try and combat a low voter turnout by encouraging students to exercise their right to vote and making voting more accessible for students on The Hill.

"On election day, the College Democrats and College Republicans co-funded a shuttle bus from Gustavus to the polls. It's a good example of our generation focused on working together," Bode said.

Sophomore College Republicans Co-Chair Jacob Johnson explained how Democrats and Republicans worked together solely to inspire voting.

"We simply encouraged people to vote as opposed to trying to encourage them to vote for one of our sides as it has been up until this point," Johnson said.

Both organizations also collaborated in order to host a community discussion on Thursday, Oct. 30 between the two candidates who ran for State Representative, Kim Spears and Clark Johnson.

However, both College Democrats and College Republicans worked hard to campaign for

their individual candidates as well. They door-knocked in residence halls on campus as well as in the St. Peter and North Mankato communities. They also took advantage of social media to spread the word about the candidates.

The College Democrats hosted U.S. Senator Al Franken, Lt. Governor-elect Tina Smith, and Representative Clark Johnson on campus on Tuesday, Oct. 28.

"Al Franken was here and he explained to people why it's so important to vote," Bode said.

The College Republicans helped campaign with Minnesota House of Representatives District 19A Republican candidate Kim Spears.

"We teamed up with representative Kim Spears to door-knock on campus and in the community," Johnson said.

Despite the College Republicans best efforts, Minnesota favored Democratic incumbents in the midterm elections.

Minnesota reelected Democratic Governor Mark Dayton. The election was called for Dayton just minutes after the polls closed, in stark contrast to the 2010 gubernatorial election when votes had to be recounted and results were not known until days later.

Dayton ran against Republican candidate Jeff Johnson who obtained 44.51 percent of the vote. Dayton won with 50.07 percent of the vote. This is the first time Dayton has been reelected to any office. Minnesota's last 28 years of gubernatorial elections show a trend of voting out Democratic Farmer Labor candidates after one term according to twincities.com.

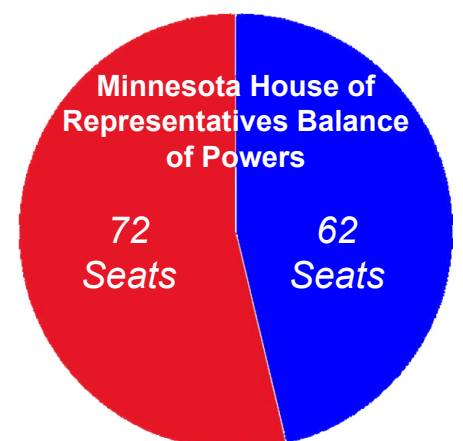
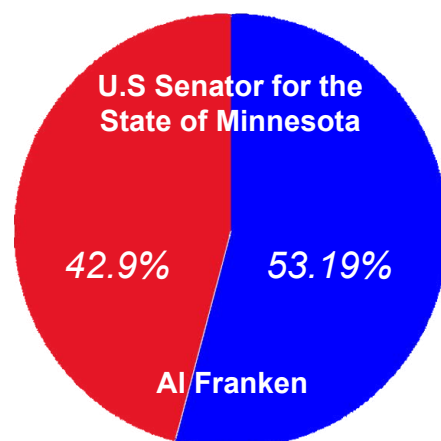
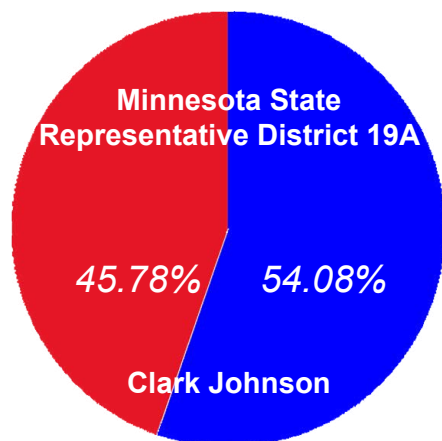
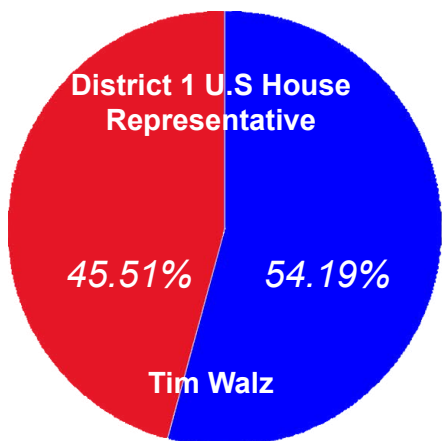
"[Dayton] became the first Democrat-Farmer-Labor governor since Rudy Perpich in 1986 to be elected to a second consecutive term," Bill Salisbury of the Pioneer Press said.

District 19A also reelected Democratic State Representative Clark Johnson to his second term in the Minnesota House of Representatives. His opponent, Republican candidate Kim Spears, acquired

**Election Results continued
on page 2**

Cameron Jarvis

Governor Mark Dayton defeated Republican candidate Jeff Johnson 50.07% to 44.51% in the race for Minnesota Governor.



The Gustavian Weekly Staff

Vincent Bartella Editor-in-Chief
 Linnea Moat Managing Editor
 Rachael Manser News Editor
 Christine Peterson News Editor
 Molly Butler Variety Editor
 Erika Clifton Features Editor
 David Roland Opinion Editor
 Phillip Evans Sports & Fitness Editor
 Kevin Pajor Entertainment Editor
 Caroline Probst Photography Editor

Aaron Lawrence Copy Editor
 Ana Hollander Copy Editor
 Andrew Lonneman Business Manager
 Konnor Tranoris Advertising Manager
 Cameron Jarvis Graphic Designer
 Dustin Luhmann Web Editor
 Glenn Kranking Adviser

Published weekly on Fridays, except during academic breaks, by the students of Gustavus Adolphus College. Subscriptions are available from THE GUSTAVIAN WEEKLY for \$40 per year.

Opinions expressed here in are not necessarily those of the institution or of its student body. The editors assume full responsibility for editorial and unsigned material.

Letters to the Editor can be sent to lettertotheeditor@gustavus.edu.

If interested in publishing an ad, please contact our ad manager, Konnor Tranoris, at admanager@gustavus.edu

50¢ First copy free

Email: weekly@gustavus.edu

Web site: weekly.gustavus.edu



Campus Safety Report

Monday, October 27

- Campus Safety responded to a report of a suspicious package. After investigation the package was determined to be non-hazardous and involved no policy violations.

- Campus Safety investigated a report of disorderly conduct involving students in Pittman Hall.

Tuesday, October 28

- Campus Safety responded to a medical assist in Pittman Hall.

Wednesday, October 29

- A Gustavus employee reported a verbal bias incident that occurred on Friday, Oct. 24, at 12:15 p.m. on College grounds by unknown persons.

Friday, October 31

- Campus Safety responded to Prairie View Apartments for a medical assist.

- A Collegiate Fellow documented a possible drug/narcotics violation in Uhler Hall involving two students.

Saturday, November 1

- Campus Safety responded to an al-

cohol violation in the Johnson Student Union. One student was referred to the campus conduct system for underage consumption.

- Campus Safety responded to a suspected drug/narcotics violation in Norelius Hall. One student was referred to the campus conduct system for a room responsibility violation and underage consumption and possession of alcohol, one student not present was referred for furnishing alcohol to minors, and three non-students were transported off campus.

- Campus Safety responded to a welfare check in Pittman Hall.

ity, whether spoken, written, symbolic or other form, which is motivated by some form of prejudice based on the victim's actual or perceived identity (i.e. sexual orientation, race, ethnicity, national origin, gender identity, ability, religious affiliation, etc.). A bias incident is a violation of campus policy and will be investigated and adjudicated.

- Hate crime: A criminal act that involves one (or more) of three specific crime groupings (assault, property damage and harassment/stalking), that is directed toward an individual or group that is (or perceived to be) a member of a protected class as defined by the Minnesota Human Rights Act and is motivated by an offender's bias. A hate crime is a violation of campus policy and will be investigated and adjudicated.

Tip of the Week:
 Gusties: Stop The Hate!

Gustavus Adolphus College aspires to be a community of persons from diverse backgrounds who respect and affirm the dignity of all people. As such, and consistent with our core values and civic responsibilities, respect for each individual is central to how we conduct our work and build relationships within our community. Therefore, harassment, discrimination, and behavior that fail to respect the dignity of another are not compatible with this shared vision of our identity and mission and will not be tolerated.

Definitions:

- Hate or bias-motivated behavior: Any act or expression directed against a person, group or their property that is motivated in whole or in part by a belief or perception regarding their real or perceived identities.
- Bias incident: an expression of hostil-

What can I do if I believe I'm the victim of a bias incident or hate crime? What can I do if I witness a bias incident or hate crime?

Make sure you are safe. Remove yourself from any potentially dangerous situation immediately. Preserve any evidence (graffiti, phone call recordings, email messages, letters, etc.) if possible. Take note of any other witnesses to the incident.

Report the incident as soon as possible by calling Campus Safety at 507-933-8888. There is also an anonymous reporting form available online:

www.gustavus.edu/deanofstudents/incident_report.php

Others to whom you can make a report include: Dean of Students Office staff, Diversity Center Director, Residential Life staff, Campus Safety Director, St. Peter Police department.

Election Results continued from page 1

45.78 percent of the votes, while Johnson won with 54.08 percent of the votes.

While the St. Peter area elected a Democratic candidate to the House, the Republicans are now in control of the Minnesota House of Representatives after eleven incumbent Democrats were voted out on Tuesday. Even though Minnesota elected a Democrat to be governor and Democrats remain in control of the state Senate, Minnesota now has a balance of power in the state legislature.

Senator Al Franken was reelected to the U.S. Senate for a second term. Fran-

ken defeated his Republican opponent Mike McFadden with 53.15 percent of the votes over McFadden's 42.91 percent of the votes.

Minnesota's reelection of DFL-er Al Franken contradicted the national trends as the power in the U.S. Senate shifted to the Republicans. Seven Democratic U.S. Senators were voted out in the Tuesday elections. Republicans retained control of the U.S. House of Representatives. The U.S. Congress is now controlled by Republicans while a Democrat holds the Oval Office.

It remains to be seen how the shifts in power both in Minnesota and in the United States will affect the state and the country.

Godfather's Pizza
 PHONE: 507-931-6140
 6 Inch Pizza & Drink \$4.49
 FREE Party Rooms
 Nightly Specials / Value Deals
 FREE WiFi
 Daily Lunch Buffet
 Receive Hot Specials Via Text Message!
 Text: gopizza To: 69302
 225 SOUTH MINNESOTA, ST. PETER
 ORDER ONLINE www.Godfathers.com
 2 Buffets with 2 Drinks 13.98
 Large 1-Topper & a Monkey Bread 11.99
 Godfather's Pizza logo and QR code.

Reshaping Gustavus Servant Leadership Program

Laura Isdahl
Staff Writer

The Servant Leadership Program (SLP) invokes unique ways of learning to stimulate education about passion, vocation, and leadership. This year the program changed its structure.

Director of Leadership and Community Based Service Dave Newell is a key leader for the Servant Leadership Program and shared his definition of what it all means to him.

"Servant Leadership Program is designed to explore leadership in two ways: self-discovery and awareness and understanding the needs of the community and others and how to act on those things," Newell said.

The group of students meets weekly, either as a whole group or within four smaller groups, called circles. Students learn how to communicate on a deeper level to build relationships and learn through self-discovery and from others.

Sophomore Biochemistry and Molecular Biology Major Sarah Barnes has been in the program

for two years and explained the loose format where students come to the group at various places and can begin to grow from there.

"SLP doesn't have definite boundaries and that is the beauty of it. However much effort that you put into it will reflect what you get out of it," Barnes said.

"Servant Leadership Program is designed to explore leadership in two ways: self-discovery and awareness and understanding the needs of the community and others and how to act on those things."

—Dave Newell

Discussions revolve around values, passion, calling, and leadership. It is a place where

busy Gusties can take the time to have important and meaningful conversations. Having a specific place to talk about leadership and learn certain skills is why students find SLP a valuable program at Gustavus.

"SLP is important because it is learning to be aware of the impact a person can have. It is about how you're a leader and have an impact, even when you're not in the spotlight," Sophomore Philosophy and Management Major Luke Israel said.

The Servant Leadership Program went to a Delano horse farm last weekend in an equestrian learning experience. There was an emphasis on group dynamics, team building, and how to overcome challenges as a group.

One challenge the group faced was directing three horses into separate corners of an arena with various restrictions placed on them.

"The horses would pick up on our emotions. When we were calm, the horses were calm. When we were trying to be productive, the horses were more agitated as well," Israel said.

While interacting with the horses the group had to see

patterns and make changes to adapt to the restrictions to reach the goal. These retreats are real life experiences where they can apply what students talk about in their circles or during large group.

"SLP is important because it is learning to be aware of the impact a person can have."

—Luke Israel

The Servant Leadership Program has had an influence on participants even after they leave Gustavus.

"I've seen the impact of SLP often after students graduate. I've had many people e-mail me with anecdotes of how the program has helped them. For example, they may have been in a situation in work and they knew how to handle it because of our work in SLP," Newell said.

There have been many changes to the program this year that have come from student sugges-

tions and ideas to improve the group. The Servant Leadership Program values open conversation and students to shape the program in ways that they see most beneficial.

SLP revamped its structure this year, replacing the three-tiered system to one with just one level.

Circles are in the process of taking their deep discussions to the next level by finding a topic that they are all passionate about and will find a way to implement this passion on campus.

Examples of these passions could be climate change, encouraging a conscious consumer society, and a variety of other issues.

"Even though the program has changed, the core values and goals are the same. We have just shifted how we see them through," Barnes said.

The program looks to foster deeper relationships in a culture of busy and over-committed Gusties that may not find the time otherwise. For more information on the Servant Leadership Program, contact Dave Newell in the Center for Servant Leadership.



SERVANT LEADERSHIP PROGRAM
GUSTAVUS ADOLPHUS COLLEGE

Office in Marketing and Communications

The Gustavus Servant Leadership Program has been making changes to its program, focusing on service to make it more effective and meaningful for students.

New Mindfulness and Contemplative Working Group

Haley Bell
Staff Writer

Gustavus is now on board with the idea of incorporating mindfulness into students' daily routines. Mindfulness means focusing on the present moment and being aware of one's thoughts, feelings, and the actions without attaching judgment to them. It can help students to embrace reality and the present instead of reflecting on the past or looking to the future.

"From a psychology standpoint, if you are consciously making those observations about your life and such, you are going to have a healthier brain. You are also going to have a coping mechanism that when you feel out of control, you have

something to rely on to get you focused on what the problem is, and how to find a solution," Senior Psychology Major Elizabeth Best said.

Mindfulness is used as a method of treatment for a range of issues, such as anxiety, depression, substance abuse, eating disorders, chronic pain, and cancer. According to the Mindfulness Project, several studies with college students suggest that the practice of mindfulness leads to decreases in stress and anxiety, improvements in concentration and attention, increases in self-awareness, and overall emotional wellbeing.

"From my personal experience, it helps me be in better touch with what is happening. I allow myself some time to feel sad, stressed, or angry. I think it's healthy, but I also focus on

the positive in each day to help create balance. It helps you sort out some problems and reflect on them," Best said.

"These practices are important as they serve as a crucial platform for deepened awareness of both self and others. The greatest asset of leaders is a strong self-awareness"

—David Newell

There are many methods used to explore mindfulness, includ-

ing meditation, yoga, and tai chi. What is known as the 'The Mindfulness Project' at Gustavus includes a working group taking part exploring these different methods.

The Mindfulness Project states it is dedicated to exploring, researching, applying, and promoting mindfulness and contemplative practices for all members of the Gustavus campus community.

Director of Wellbeing Meghan Krause formed the group that will be exploring this project.

"I formed this group to capitalize on the good work of these individuals so that we can work to shape a cohesive and interdisciplinary approach to contemplative practice. We want to advance learning environments that support focused attention, wonder, compassion,

open inquiry, and social connectedness," Krause said.

These practices have been a part of the Gustavus community for years, but have recently gained more attention. With the new group on campus and the 'Exploring Religious Questions' series that focused on Meditation, Mindfulness, and contemplative practices from religious and medical standpoints, mindfulness is a growing topic of conversation on campus.

"These practices are important as they serve as a crucial platform for deepened awareness of both self and others. The greatest asset of leaders is a strong self-awareness and

Mindfulness continued on page 4

Policy changes for student cafeteria usage

Kaity Young
Staff Writer

Due to recent policy changes in the Evelyn Young Dining Room, student organizations can no longer use the space as a venue for their events. The Drag Show on Friday, Oct. 31 was the last student organized event to be held at the Evelyn Young Dining Room.

When the Dining Room opened in 2000, Dining Services was unsure whether they would allow events to be hosted at all.

“At that time, we thought about what types of programming might occur, and we had a lot of groups approach us. We decided to give it a try. We got a lot of complaints from students who were trying to study or who wanted a neutral space where they could come to eat, not to get programmed. So we pulled back and said we’re not doing any of it,” Director of Dining Service Steve Kjellgren said.

In recent years, however, there have been a number of events hosted in Evelyn Young Dining Room. Events such as the Drag Show, GAC Idol, and Mr. Gustavus are among the most recognized of these activities.

“I’ve gotten increasingly more requests, so we had to put the brakes on and regroup. I was getting some pushback from students saying they wanted to just come to eat. It’s time for us to say this is a neutral space again for a while and see how that goes,” Kjellgren said.

Word has now spread about

the decision to no longer offer the Evelyn Young Dining Room as a venue for organization events, and students expressed concern about how this will affect the community events or the attendance of these events.

“I think the community as a whole might suffer slightly from the changing of the policy in consideration of participation at events.”

—Mandy Schlauderaff

“I think the community as a whole might suffer slightly from the changing of the policy in consideration of participation at events. There will be potentially less people at the events, as opposed to there being people forced into attending by eating dinner,” Junior Mandy Schlauderaff said.

Other students were also concerned about how the difference in convenience would change the audience.

“I think there are a lot of events people won’t go to if it’s out of their way, but they appreciate it if it’s happening when they’re in the Caf,” Sophomore Will Riihiluoma said.

Kjellgren has already been looking for a solution for potential changes in student attendance due to location changes.

“Moving forward, we can put



Submitted

Different events on campus such as “Mr. Gustavus” will be affected by the caf policy change.

sandwich boards in the front door of the Evelyn Young Dining Room that list events, and they can still reach that audience. If they choose to go, great. If not, they can sit in the quiet place that they came there for. If those events are huge failures because they couldn’t be held in the Evelyn Young Dining Room, then those people hosting the events need to come and tell me,” Kjellgren said.

Students, too, have been looking for a way to keep attendance

high. Some have considered compromises for the situation in order to keep the Caf available for use by student organizations.

“I can see why they made this decision. However, it seems slightly brash. I think there are a lot of really good activities that happen in the Caf, and I think they could just say specifically which ones no longer can be done or have a committee that decides which organizations can use the space. Having none

seems too limiting,” Riihiluoma said.

With concerns coming in from the student body, Dining Services has kept in mind the purpose of the changes that have been made.

“I know there is some concern that some right has been taken away. I would look at it the opposite way. We are respecting the rights of those who really came just to eat. It’s a neutral space. We’ll all eat together. It’s a community,” Kjellgren said.

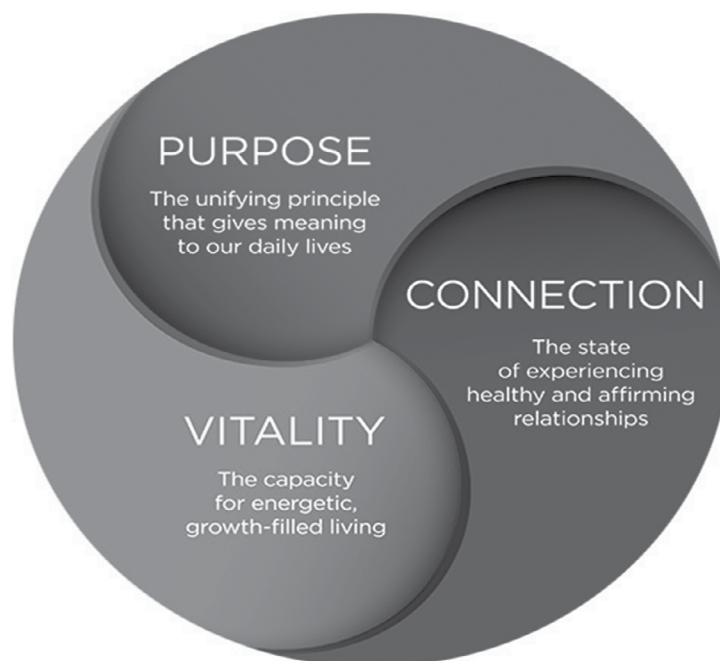
Mindfulness continued from page 3

understanding for the needs of others, and mindfulness and contemplation are central to both of these,” Director for Leadership and Community-Based Service in Center for Servant-Leadership David Newell said.

“Contemplative practices help enhance focus, decrease negative emotion, diminish fatigue, improve memory, promote emotional intelligence, increase cognitive abilities, and even reverse the aging process.”

—Meghan Krause

People among campus that already take part in these practices support the idea that it is



Office in Marketing and Communications

Gustavus students are starting a new group on campus in order to promote incorporating mindfulness into a students’ everyday life.

a good way to create a positive attitude among the student body. The Working Group is dedicated to contributing towards the bettering of people’s learning, teaching, and working in education.

“To me, mindfulness is simply bringing intention in what we spend our energy paying attention to. It is being purposeful with our time and focus and giving weight to time spent thinking without distraction.

We live in a culture that is very much about doing but offers little expectation around time spent thinking,” Newell said.

Not only do personal testimonies support mindfulness, but research also supports the

value of contemplative practices in multiple aspects of life. These practices are found to be beneficial in areas ranging from the work force to athletics.

“Beyond thinking, mindfulness and contemplation have physical health benefits. I think students are overwhelmed with obligations at times, which is exacerbated by the need to feel connected, with others or through technology. There is no longer down time. Mindfulness allows for rejuvenation as it slows us down in the busy pace of life, and brings intention to our time and allows the space to reconnect with oneself,” Newell said.

“Contemplative practices help enhance focus, decrease negative emotion, diminish fatigue, improve memory, promote emotional intelligence, increase cognitive abilities, and even reverse the aging process,” Krause said.

Anyone interested in joining the Mindfulness and Contemplative Working Group can visit the Wellbeing Center. All are welcome to join, and more information can be found on the Gustavus Wellbeing website.

GUSTIE *of the* WEEK

Jaurdyn Dobler
Staff Writer

From center stage to behind the curtain, Sophomore Sadie LaPlante was initially nervous about her position as Assistant Director for the Gustavus production of *Angels in America*. Accustomed to being a performer, Sadie couldn't find happier adjectives to describe her experience behind the scenes as the production wrapped up last Sunday.

"It was difficult to get used to at first because I was used to being in the close knit cast on the stage. But honestly, it was an awesome opportunity. Now I know the inner workings of a production and I was able to experience a deeper exploration of what goes into creating the final product that everyone sees and loves. I couldn't be more proud to have played the part that I did," Sadie said.

While she may have been nervous before taking the position, most who worked with Sadie said that she excelled. Her roommate, Sophomore Claire Chwalek, followed her adjustment to the role.

"She has worked incredibly hard the past few months. Watching her come home after each practice, I know she was dog-tired but I could see in her eyes that she was working hard to do her part for the show. She has such strength and non-

wavering devotion to the things she puts her mind to," Chwalek said.

Sadie's dedication to everything she commits to is evident in her ability to juggle her position as assistant director while being a member of Sigma Sigma Sigma, Queers and Allies, and her studies in sociology and theatre. Her mind is set on combining sociology with theatre in order to make a difference.

"She's a social butterfly always willing to talk to anyone. She also has one of the biggest hearts I have ever seen. She's a truly genuine person who lights up a room."

—Amanda Downs

"I'm so passionate about the artistic realm and activism. Right now I'm working on a research project in my sociology class about political and social justice theatre. I would love to be a director of something like that someday. To use my artistic abilities that I love and apply that to any social justice issue I'm passionate about would be

amazing," Sadie said.

When she finds time to spare, Sadie says she loves to go out and have fun at the Dive but she's also content to curl up with friends and popcorn on the couch watching *American Horror Story*.

"Sadie has such a commanding presence. She is so funny and a total chatterbox. She's a social butterfly always willing to talk to anyone. She also has one of the biggest hearts I have ever seen. She's a truly genuine person who lights up a room," Sophomore Amanda Downs said.

Within the rest of her time at Gustavus, Sadie says she wants to live by the cliché and make her life count. She wants to continue to grow, meet more people, and prepare herself for life after Gustavus. She expresses that one of the most important ways she's learned to accomplish this is to continue to step outside her comfort zone.

"She has such strength and non-wavering devotion to the things she puts her mind to."

—Claire Chwalek

"You can't be afraid to step outside your comfort zone and expand your horizons a bit. When I said yes to be assistant director, I had no idea it would shape me as much as it has. I met some of



Caroline Probst

Friends describe Sadie as genuine, strong, and hard working.

my best friends, learned more about theatre and gained self-confidence in my leadership abilities. It wouldn't have happened if I was too afraid to try it," Sadie said.

While Sadie strives to continue her self-growth, people who've met her agree she's already a tremendous Gustie.

"Sadie likes to be a part of a community like Gustavus because of the familial relationships the students and alums have. She knows what she wants and she does not let anything stop her from achieving it. She is a strong leader, a great student, and an amazing friend," Chwalek said.



Caroline Probst

During the rest of her time at Gustavus, Sadie will strive to continue stepping out of her comfort zone and grow as a person.



Caroline Probst

Sadie was Assistant Director of *Angels in America*, which gave her confidence and leadership experience.

Tales from Abroad

Dasha Terenteva
Guest Writer

My name is Dasha Terenteva. I am a junior Biology Major and an international student here at Gustavus. I come from a small city called Gus-Khrustalnyi, Russia. One of the many things that surprised me when I came to the United States was how differently high schools and colleges are organized here. Since I have never gone to college in Russia, I wanted to compare my high school experience back home to my experience here in U.S.

My home city is relatively small for Russia, with about 80,000 people. So my high school was very small. Typically we have a large number of smaller schools scattered around the city, rather than having one larger school for a

large area. Schools in my city are usually three-floor buildings housing all the grades from first grade to eleventh. Thus the word "school" for me means elementary, middle and high school together.

People are confused when I say we only have eleven grades in Russia, but that is the truth. It's normal for people to graduate high school at the age of seventeen, which is early in the U.S. I was also shocked to hear how large graduating classes are in America and that it is impossible for people to know everybody in their high school. Back home it is completely different. We know almost everybody who goes to our school. Another important thing is that from the first grade until the end of high school, all grades are usually separated into 3-4 groups (A, B, C, D), not based on their performance. For example, we can have 1A grade, or 11B



After coming to Gustavus from a small town in Russia, Dasha Terenteva has a unique international perspective. Submitted

grade. These grades usually consist of 25-35 people, depending on how large the school is. Once you have been assigned to a certain letter, you stay with the same group of people for all eleven years. This way, by the end these eleven years, you become really close friends and almost one big family. That is my favorite thing about Russian school.

Unfortunately, we don't get to decide which classes we want to take in Russian school, and all people in a grade have to

take the same classes, which are determined by the curriculum. The number and complexity of classes usually increases with the grade. We also do not have the same schedule everyday, like students in American high schools do. In Russian schools, students have different classes every day, although basic classes such as Math and Russian are scheduled every day, or at least four days a week. My least favorite thing about Russian school is that we have classes on Saturday starting from ninth

grade, although there are usually three classes compared to seven or even eight classes during the week. Other interesting fact is that schools do not have athletic teams. People who want to do sports join sports clubs in the city.

There are many more interesting things that I can tell about Russia, but only a certain amount of space in the paper. I would be glad to share more if people are interested, feel free to ask questions if you see me around.

Tales from Abroad is an ongoing section in which Gustavus students share the highlights of their international and study abroad experiences.

Lucy fails to unlock full potential despite strong cast



Brady Lass
Staff Writer

It's been a while since we've seen Scarlett Johansson in the center stage. She's been getting recognition lately thanks to her portrayal of Black Widow in the Marvel Cinematic Universe and smaller roles like her voice in *Her*. However, we get *Lucy* from writer Luc Besson, known for writing *Taken*, who gives Johansson her superhuman abilities.

The box office closed with 400 million dollar gross, but does that make *Lucy* worth seeing, or should you turn off 90% of your brain for this screening?

Lucy, a woman in her mid-20s, was studying in Taiwan, is tricked into working for a Korean drug lord by delivering a bag of a valuable drugs to her boyfriend. However, the drug lord captures her and forces his men to sew the drugs into her stomach. When the plan goes wrong, Lucy retains superhuman abilities like telepathy and super intelligence. She discovers that the drug is causing her brain to increase to full cerebral



Scarlett Johansson plays Lucy, a young woman abroad whose life is forever changed after drugs unlock her mind to access its maximum capacity. Creative Commons

capacity. She works together with Professor Norman, Morgan Freeman, to figure out what to do with her growing intelligence and cerebral capacity as she takes on the drug lord and his gang.

Yes the theory that humans only use 10% of their brains is heavily flawed, but I don't think the movie should be judged primarily on that. The concept of unlocking full cerebral capacity itself is interesting. Unfortunately, Besson primarily uses it as an excuse to give Johansson superpowers and implement cool visuals and action sets. There are thought provoking

themes to explore, but when the movie is only ninety minutes long and has quite a few action scenes, the audience will not be impacted by them as much. People complain about Christopher Nolan's movies being too long, but there is a good reason for that, he gets the audience in on the action but takes the time to explore the themes of the story. Not that *Lucy* doesn't explore themes, and I did like the focus on humanity and how it impacts the human mind and how one uses knowledge. Unfortunately, the characters are not particularly memorable either to carry out these messages.

The acting isn't bad. Scarlett Johansson is well cast; she's one of those actresses who can fill an emotionless role very well. Morgan Freeman's fits the role of a wise professor and allows everyone to once again hear his mesmerizing voice. He's kind of like Christopher Walken—I don't care about his character, it's just nice to see them on screen. Choi Min-Sak and Amr Waked do all right jobs as the villainous Mr. Jang and the police officer Del Rio, but like their characters, nothing memorable. The effects seen during Lucy's abilities and action scenes are pretty good, but nothing to

write home about.

Lucy is all right, nothing great but nothing terrible. The concept itself could've been utilized better than selling the action scenes, but I've seen worse (*The Purge...*), it does have some interesting themes when cars aren't blowing up and the actors do an OK job with what they're given with. If you want to see similar concepts done in a more interesting manner, I've heard that *Limitless* is pretty good, but as of now, *Lucy* is just an ok action movie with a good lead.



Symphony Orchestra Fall Concert



Directed by Dr. Ruth Lin, the Gustavus Symphony Orchestra will fill Bjorling Hall with their music on Nov. 7. Office of Marketing and Communication

Hunting for deals at Does on the Go

Kim Krulish
Staff Writer

This year, not everyone needs to be a hunter to celebrate hunting season. The Evangelical Lutheran Good Samaritan Society of St. Peter will be kicking off 'Does on the Go,' a free event that is open to the public starting on Nov. 8, when deer season opens.

The event will allow attendees to get a head start on holiday shopping with the help of some of the many vendors that will be there. The a variety of vendors includes Mary Kay, Thirty One, Pampered Chef, Tastefully Simple, Papparazzi Jewelry, Origami Owl, Usborne Books, and many others. 'Does on the Go' will be hosted at Heritage Meadows 1302 W. Traverse Rd., St. Peter. The event is not just for shopping. There will also be refreshments, health screenings, and door prizes.

The Good Samaritan Society, provides housing, services, and employment to qualified individuals. The Society hosts a variety of events throughout the year. During its ten years in business, the Good Samaritan Society-Home Care has provided services to more than 2,500 clients within a 60-mile radius of St. Peter. In 2011, the Society was honored with the HomeCare Elite Award, which is given to top performing home health agencies in the United States. The Society has also participated in a home health research project which was based on health monitoring technology that was placed in the homes of senior citizens to detect falls and prevent future medical problems.

"It's been a pleasure to be part of the St. Peter community and provide help to our clients," Home Care Director Cassie Hrdlicka said. "Our goal has always been to provide the assistance and services needed so seniors and others can remain as independent and healthy as possible right in their homes."

The event will be held on Saturday, Nov. 8, from 8 a.m. to 11 a.m. to celebrate the deer season opener.

The Good Samaritan Society has created a Facebook page for the event. On the page, attendees can join the event, learn more about it, and post comments. For more information on 'Does on the Go,' call the St. Peter Good Samaritan Society at (507)-931-8545 or visit the Society's website at <http://www.good-sam.com/index.php/locations/stpeter>.

Dan Vruno
Staff Writer

Despite the busy semester for the Music Department, the faculty and musicians are continuing the Gustavus tradition of dedication to their performances. The concert is Directed by Dr. Lin and will feature the Gustavus Symphony Orchestra in a concert open to the public.

Assistant Professor in Music Ruth Lin has been conducting the symphony orchestra since 2010. The symphony orchestra has had a long and deep history on campus after its establishment back in 1888. As the official touring orchestra ensemble at Gustavus, the group has toured internationally to the British Isles, the People's Republic of China, and South Africa. Having just performed at this year's 50th Nobel Conference, and currently preparing their performance for Christmas in Christ Chapel, the symphony orchestra is a vital part of the music department here at Gustavus.

"Hopefully this concert will show the love the students and I have for music."

—Ruth Lin

With nearly seventy members, only a quarter of them being music majors, Dr. Lin spoke of the diversity found within music.

"75% of the students are not music majors, making it a very diverse part of campus. I think

they are always a fantastic bunch and I'm always amazed at their dedication. The way they are able to play music and be so dedicated even though most of them are not majors, they do it because of their love for music. Hopefully this concert will show the love the students and I have for music," Dr. Lin stated.

"The audience can expect a variety of sounds within the Schubert, and the flute concerto is going to be really amazing."

—Emily Weltzin

Known for performing a broad selection of symphonic repertoire, the concert will feature two pieces. The Gustavus Symphony Orchestra, known for performing with faculty and guest soloist, will see their first piece joined alongside with a flute soloist. Barb Leibundguth, adjunct instructor in Music and Music-Instrumental, will be playing the flute along with the orchestra for "Concerto for Flute and Orchestra, op. 8" by Otar Godeli (1928-1994).

Dr. Lin talked about how the entire rehearsal process is as much as a kick as the actually performance is.

"Music ensembles live in such a weird vacuum in which there is no other classes that completely revolves around group projects. Most of these students I have for four years and I get to see them develop. Musically playing different pieces open different bench-

marks. This semester itself has had a lot of things going on, so while the students may just be a bit burned off, I am extremely proud of how much work they have done. We are always setting these high bars that we reach and in return we keep setting higher bars. We are taking a journey together even if it sounds a bit cheesy. I'm extremely proud of them and nothing makes me happier than going into rehearsals with them," Dr. Lin said.

Sophomore and Biochemistry and Molecular Biology Major Emily Weltzin is one of the many members of the symphony orchestra. Having played the viola for the orchestra for the past year and a half, she has had a great time with the symphony orchestra so far.

"Being part of the Gustavus Symphony Orchestra has been a very positive experience for me. I've enjoyed the music we've played, and there are so many great people in the ensemble so it's always a nice way to end my day. I am looking forward to being a part of the final result, and letting the audience hear the progress we've made. The audience can expect a variety of sounds within the Schubert, and the flute concerto is going to be really amazing," Weltzin said.

Along with this concert and Christmas in Christ Chapel, those in the orchestra can look forward to their next international tour in January 2016 to Greece and Turkey.

Open and free for everyone to attend, the concert will be on Nov. 9 at 1:30 p.m. in the Bjorling Recital Hall. Dr. Lin and her students hope that those who attend the event witness the excitement and electricity they have been working hard to put into the show.

November Fine Arts Events in Bjorling Hall

7th 7:30 p.m. Dana Landry Jazz Trio

9th 1:30 p.m. Gustavus Symphony Orchestra Concert

15th 1:30 p.m. Gustavus and Vasa Wind Orchestra Concert

16th 1:30 Brassworks! 2014 7:30 p.m. Shelby Roles, Senior Piano Recital

22nd 1:30 p.m. Gustavus Philharmonic Orchestra Fall Concert

23rd 1:30 p.m. Gustavus Fall Jazz Concert

3:30 p.m. Woodwind Chamber Ensemble Fall Concert

7 p.m. Gustavus Percussion Ensemble

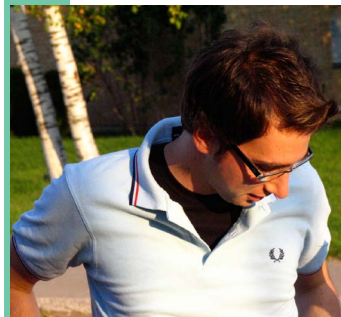
25th 7 p.m. Gustavus Choir 30th annual Nordic American Thanksgiving Breakfast

Blast from the Past

The Fashion Trends:

Some of these trends were one-hit wonders while others never seemed to leave:

- Von Dutch Hats
- Layered Polos
- Ruffled Mini Skirts
- Uggs
- Velour tracksuits
- Pointed toe heels
- Semi-transparent sunglasses



All Photos from Creative Commons

A look at pop culture, politics, and Gustavus news from 10 years ago

Sports:

World Series

The 2004 World Series was played between the Boston Red Sox and the St. Louis Cardinals. Boston swept St. Louis in four games to end their "Curse of the Bambino." The Curse began in 1919 when the team sold Babe Ruth to the New York Yankees which prevented them from winning a World Series until 2004.



Super Bowl 38

The New England Patriots defeated the Carolina Panthers (32-29) in their second Super Bowl win within three years. Sports Illustrated called it the "Greatest Super Bowl of All Time."



Politics

- Arnold Schwarzenegger became the Governor of California.
- George W. Bush won the election and entered his second term as President of the United States.



All Photos from Creative Commons

Heated Debates:

- War on Terror- increased spending on security and monitoring of citizens' everyday lives
- Gay Marriage
- Abortion- Pro-Life vs. Pro-Choice

Top Billboard Music Hits:

1. "Yeah"-Usher feat. Lil Jon & Ludacris
2. "Burn" - Usher
3. "If I Ain't Got You" - Alicia Keys
4. "This Love" - Maroon 5
5. "The Way You Move" -Outkast feat. Sleepy Brown



Creative Commons

Erika Clifton
Features Editor

While friends are posting throwback pictures, reminiscing on the past, we sometimes forget how fast time goes. In 2004, most current college students were in the prime of elementary school, sometimes unaware of the world around them. For example, while most elementary schoolers were learning ABCs and the layers of the Earth's crust, Facebook was being launched at Harvard University and the Summer Olympics were happening in Athens, Greece. It is easy to forget when things happened, so here is a way to remember some great happenings of 2004.

Notable Deaths:

- Ronald Reagan
June 5
- Ray Charles
June 10
- Julia Child
August 13



Creative Commons



Creative Commons



Creative Commons



Creative Commons

Celebrity Couples & Break-ups:

- Ryan Reynolds & Alanis Morissette got engaged
- Justin Timberlake & Cameron Diaz dated
- Hilary Duff & Joel Madden started dating
- Britney Spears & Kevin Federline got married
- Brad Pitt was accused of cheating on Jennifer Aniston with Angelina Jolie
- Jennifer Lopez and Ben Affleck split up

Top 5 Movies released :

- The Notebook
- Saw
- Mean Girls
- The Incredibles
- Troy



Creative Commons

Top Television Shows:

- Lost
 - House, M.D.
 - Desperate Housewives
 - Entourage
 - Deadwood
- * Friends ended its TV run on May 6, 2014.



Creative Commons

What was happening on the Hill?

- Big Concert:
Something Corporate
Opening bands:
Yellowcard
The Format
Sleeping at Last
- President Jim Peterson was inaugurated in April as the 14th president of Gustavus.

- All Greeks' pledging activities were cancelled because of multiple hazing reports.



Creative Commons